

DTC-335 SdEye

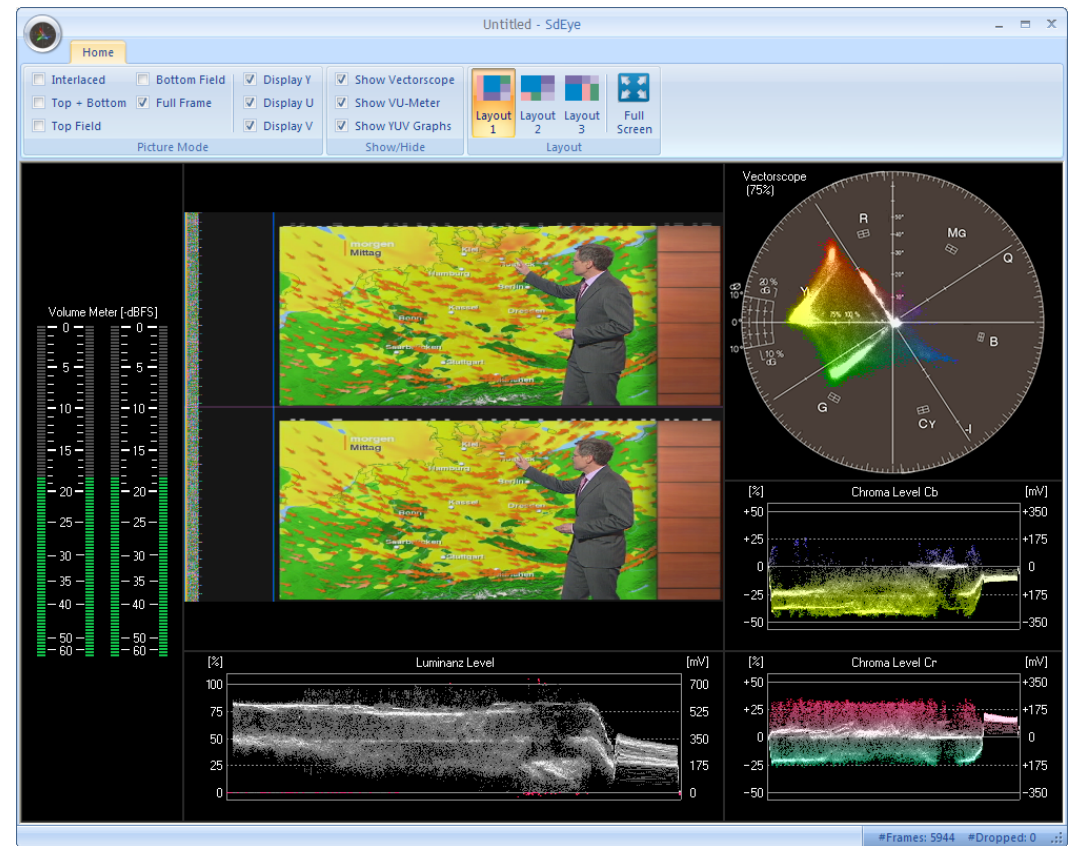
Real-Time SDI Waveform Monitor

Features

- Cost-effective real-time waveform analyser for SMPTE-259M signals
- Displays picture, YUV waveforms, vectorscope and VU meter
- Offline mode for analysing SDI files recorded with DtGrabber+
- Different picture display modes: interlaced, top- or bottom-field only, top and bottom field, full SDI frame
- User can select whether he wants to display Y, U and/or V components in the picture
- Line selector for viewing a single line
- Graphs can be individually enabled or disabled
- Full-screen mode
- Contemporary GUI with quick access buttons and user-selectable window layout
- Supports all of DekTec's SDI capable adapters including bus-powered USB-2 units for portable SDI monitoring

Applications

- Cost-effective SDI monitoring
- Off-line SDI file analysis



Key Attributes

Parameter	Value
Input Signal	SMPTE-259M
File Format	.dtsdi*

* Proprietary file format used by DtGrabber+

PC Requirements

Platform	Windows XP/2k3/Vista, 1024MB
Processor	P4@3.0Ghz* Core 2 Duo@1.7Ghz*

* Or equivalent AMD processor

Supported Input Adapters

Bus	Supported Adapters
PCI	DTA-124, DTA-145, DTA-160
PCI Express	DTA-2144, DTA-2145
USB-2	DTU-225, DTU-245

Ordering Information

Type	Description
DTC-335	SdEye SDI Waveform Monitor