

DTC-340 RFXpert

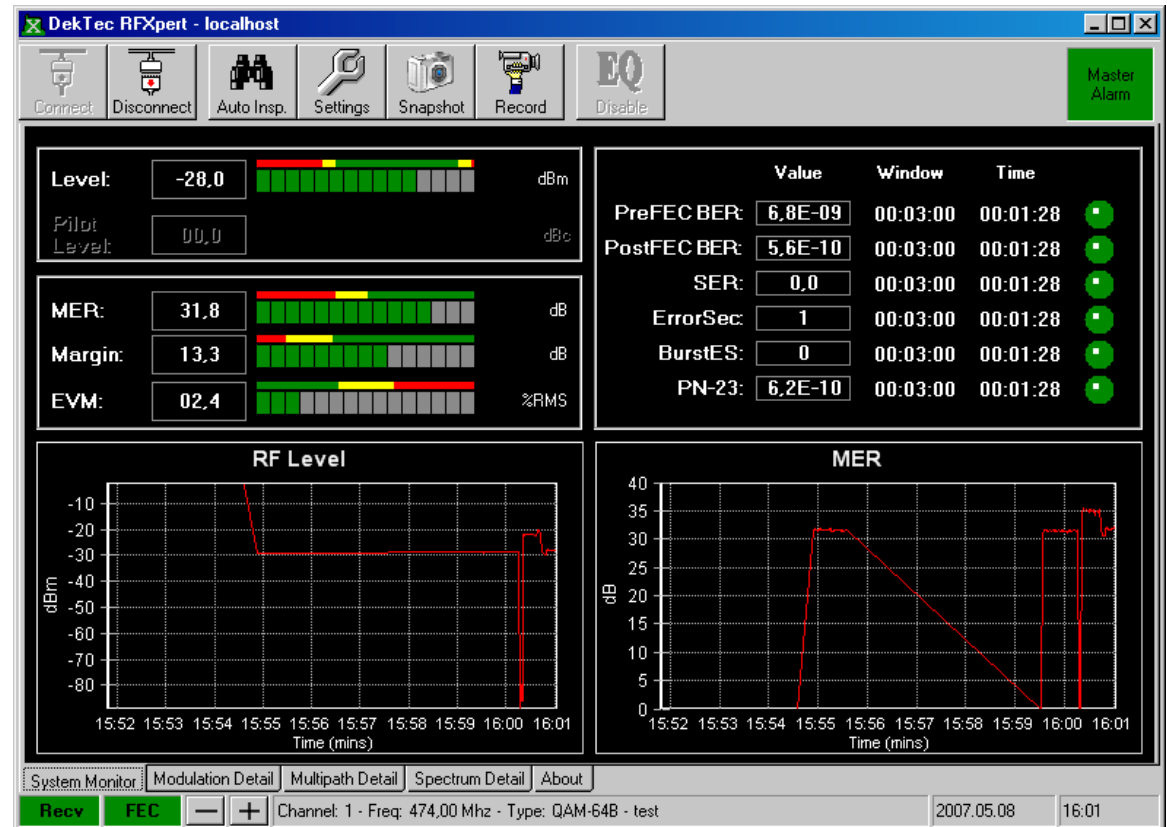
RF Monitoring and Analysis Software

Features

- Real-time RF analysis of modulated digital TV signals using DTU-234 or DTU-235 USB-2 RF probe
- Main window displays overview of current RF status, monitor status and RF level and MER histograms
- Master alarm indicators for a quick check of signal integrity
- Several windows with graphs for assessment of signal quality
- Alarm logging with configurable pass/warn/fail thresholds
- Logging of RF statistics with programmable averaging window size
- Client-server architecture: RFXpert can connect to the RF probe over a network
- Supports creation of a channel plan for easy tuning; Standard channel plans and auto-channel search are provided
- Auto-inspect feature allows the automatic measurement and logging of every channel within the defined channel plan

Applications

- Continuous monitoring of DVB-T, 8-VSB or QAM-B signals
- With DTU-234 or DTU-235 RF Probe: Comprehensive solution for doing digital television fieldwork on a laptop computer
- RFXpert can run with *StreamXpert* for parallel RF and transport-stream analysis



Key Attributes

Indicators and Graphs
PreFEC BER, PostFEC BER, SER, Error Seconds
RF-level histogram vs time
MER histogram vs time
Constellation and Eye Diagram
Multipath Echo Profile
Channel Response
Channel-, Adjacent- and System Spectrum

Supported Input Adapters

Bus	Supported Adapters
DTU-234	8-VSB / QAM-B RF probe for USB-2
DTU-235	DVB-T RF probe for USB-2

Ordering Information

Type	Description
DTC-340	RFXpert RF monitoring and analysis