

DTC-346-SAM

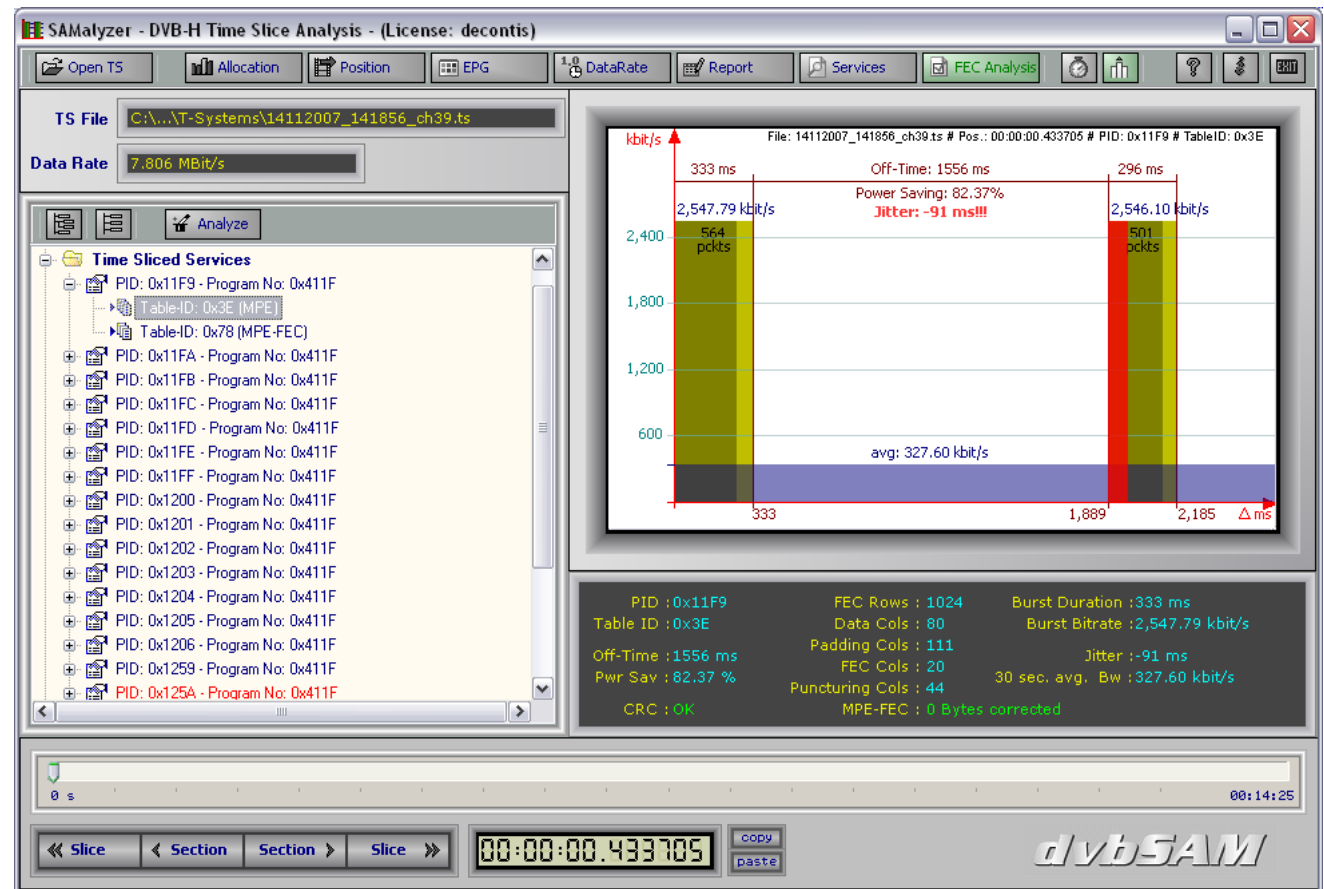
dvbSAM – DVB-H Tool Suite

Features

- Decontis' *dvbSAM* DVB-H analysis, monitoring and measurement solution
- Suite of advanced analysis tools comprising of *SAMalyzer*, *SAMcorder*, *SAMbera*, *SAMflute*, *SAMesg* and *SAMitor*
- Covers all layers of DVB-H, including RF, MPEG, MPE, IP, RTP, FLUTE/ALC, ESG, audio and video
- MPEG analysis according to TR 101 290 (Priority 1/2/3)
- MPE-FEC verification of all(!) MPE services, exact detection of all erroneous bytes
- IP packet error ratio, delta-t jitter and MFER calculation of all time-sliced services
- Detailed IP and port statistics of IP services
- RTP sequence counter verification
- SDP port compliance check
- Plausibility checks between PSI/SI tables, announced services, IP content and ESG
- Reception, analysis and monitoring FLUTE/ALC carousels
- In-depth ESG analysis
- Support of DVB-IPDC including BiM and OMA-BCAST
- Extraction of all ESG files, i.e. XMLs, SDPs, images...
- Watching of all AV services simultaneously

Applications

- Monitoring, maintenance, development and testing of DVB-H equipment, networks and services
- Powerful general-purpose transport-stream analysis



Supported Adapters

Bus	Supported Adapters
PCI	DTA-107, DTA-110(T), DTA-115, DTA-145, DTA-160
PCI Express	DTA-2135, DTA-2145
USB-2	DTU-225, DTU-245

Ordering Information

Type	Description
DTU-245-SAM	Bundle of DTU-245-DP with <i>dvbSAM</i> DVB-H tool suite
DTC-346-SAM	<i>dvbSAM</i> software upgrade