

DTC-720 Xpect

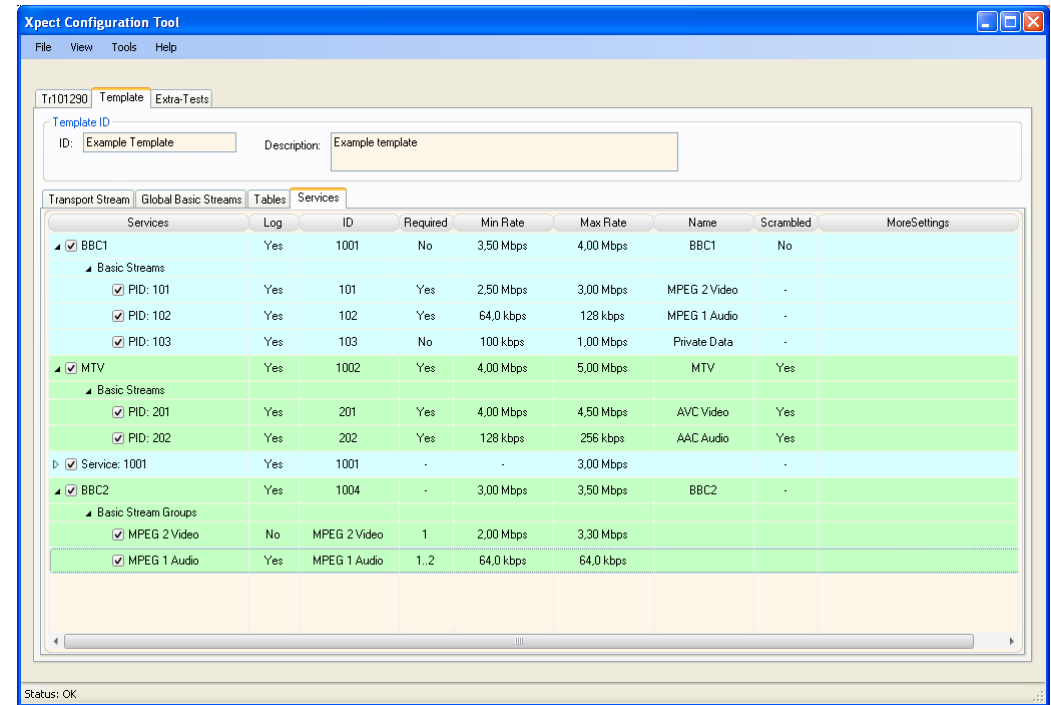
24/7 Transport-Stream Monitoring Software

Features

- Simultaneous monitoring of multiple MPEG-2 transport streams
- TR 101 290 conformance testing:
 - Priority 1, 2 & 3
 - PCR AC, FO, DR and OJ
 - MGB bitrate measurement
- Template Matching: Checks properties of services, service components and tables
- Capturing of the monitored transport stream to a file, with pre- and post-trigger buffer, client initiated or triggered by a TR 101 290- or template violation
- Maintains detailed statistic information:
 - Minimum/maximum/average bitrate
 - PCR statistics: AC, FO, DR and OJ
 - Delay Factor and Packet Loss (MDI)
- Can be integrated with 3rd party monitoring systems for 24/7 network supervision
- SOAP and SNMP interface for remote control and automated access to statistics and error-event database
- Web interface for remote configuration and access to event log and statistic information
- Includes configuration tool for easy creation of templates and TR 101 290 profiles
- With DTA-160: forwarding of transport stream over IP for remote real-time analysis or viewing

Applications

- 24/7 Network supervision
- Automated equipment test and validation



Supported Input Adapters

Signal Type	Supported Adapters
DVB-ASI	DTA-124, DTA-145, DTA-160, DTA-545, DTA-2144, DTA-2145, DTU-225*, DTU-245*, DTE-3120
DVB-SPI	DTA-122
Receivers	DTA-2135, DTU-234*, DTU-235*
TSoIP	DTA-160

* For evaluation and demos, not recommended for operational use

Related Products

Type	Description
DTC-320	StreamXpert transport-stream analyser for interactive usage

Key Attributes

Parameter	Value
Min. #TS that can be monitored in parallel (P4@3GHz, 1GB)	1x 214Mbps 4x 75Mbps 8x 30Mbps
Supported platforms	Win XP/2k3/Vista/2k8

Ordering Information

Type	Description
DTC-720-TS1	Xpect monitoring, 1 TS
DTC-720-TS2	Xpect monitoring, 2 TS
DTC-720-TS4	Xpect monitoring, up to 4 TS
DTC-720-TS8	Xpect monitoring, up to 8 TS