

USB-2 ASI/SDI Adapter with DVBAalyzer

- The Digital-TV Engineer's Final Fantasy
- Powerful Analysis and Visualisation Tools
- Portable Streaming of DVB-ASI and SDI

HARDWARE FEATURES

- Convenient, compact USB adapter that can be used to generate, capture, and analyse MPEG-2 transport streams (DVB-ASI) and uncompressed serial digital video (SDI)
- USB powered - no power supply required
- Independent operation of input and output:
 - Full-duplex: maximum combined bitrate of 160 MBps
 - Half-duplex: Full DVB-ASI and SDI bitrate range

ANALYSIS FEATURES

- *DVBAalyzer* enables in-depth analysis of DVB Transport Streams, from high-level overviews down to bit-stream compliance
- The powerful analysis and decoding features of *DVBAalyzer* help developers, broadcasters, system integrators and field operators during maintenance, development and testing of DVB equipment, networks and services

with



BUNDLED SOFTWARE

- DVBControl's *DVBAalyzer* software with:
 - -TP option: Analysis of Teletext, Private Data, Subtitling and Hex viewing
 - -OD option: Object/Data-Carousel and IP-traffic analysis
- *DtGrabber+* advanced capturing
- *DtTV* Transport-Stream television, mosaic
- *StreamXpress* ASI / SDI player

KEY ATTRIBUTES

Parameter		Value
Connector		75-Ω BNC (2x)
ASI	Physical Layer	EN50083-9
	Bitrate Range	0...160 Mbit/s*
	Packet Size in Bytes	188 or 204
SDI	Physical Layer	SMPTE 259M
	Bitrate	270 Mbit/s
	#Bits	8 or 10 bit
Power (through USB-2)		5V, 400mA max
Dimensions in mm (LxWxH)		87 x 104 x 30

* Maximum total bitrate (Input+Output) in full-duplex mode. In half-duplex mode the full ASI/SDI range is supported

MINIMUM PC REQUIREMENTS

USB Port	USB-2*
Processor / RAM / Disk	Please refer to documentation of <i>DVBAalyzer</i> , <i>DtGrabber+</i> , <i>StreamXpress</i> and <i>DtTV</i>

* USB-1 ports provide insufficient bandwidth and are not supported

ORDERING INFORMATION

Type	Description
DTU-245-DVB+	USB-2 ASI/SDI Input+Output Adapter with <i>DVBAalyzer</i> , <i>DtGrabber+</i> , <i>DtTV</i> and <i>StreamXpress</i> Software

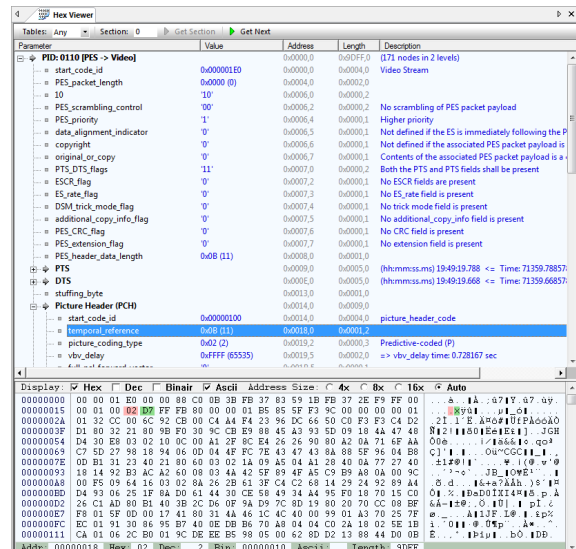
The latest pricing information and a list of DekTec resellers can be found on www.dektec.com.

DVBAnalyzer Features

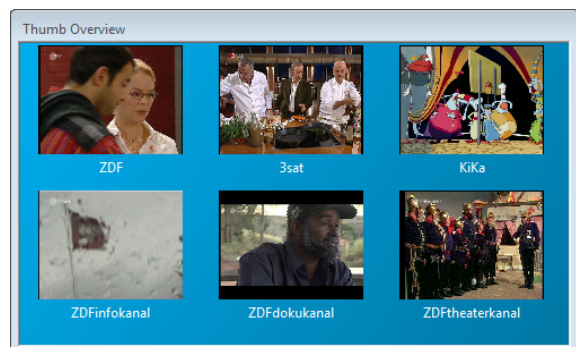
- **PID, Services, SI/PSI/PSIP**
Detailed information from Elementary-Stream settings to timing data
- **Filters**
Selective analysis with filters for sections, PES, video, audio, referenced, unreferenced, locked, unlocked or ghost PIDs
- **Export**
Record single or multiple PIDs as ES / PES / PS / section / data, sections as text or XML and thumbs or teletext as images
- **Graphics**
Grid, bars, time, pie, stacked: real-time graphical presentations of bitrates and PIDs
- **Video, Audio Thumbs**
Thumb overview off all services
- **Channel Navigation**
End-user TV/radio presentation
- **TR101 290**
DVB compliancy testing
- **Bitrates**
Transport stream and payload bitrate
- **PCR, Timing**
Display of PCR frequency and precision
- **EPG**
Visualisation in service and time dimension
- **Teletext**
Graphical, tree, grid and statistical views
- **Subtitles**
Real-time DVB subtitle decoder
- **Hex Viewer**
In-depth bit-field representation of section-, audio-, video-, teletext- and DSMCC payload
- **DSM-CC**
Data and object carousel broadcast viewing
- **IP Traffic**
IP over DVB interpretation
- **Multicast Output**
Re-transmit services via UDP Multicast
- **Logs**
Detailed info, warning and error logging



Teletext decoding and analysis



Hex viewer and bit-field decoder



Video thumbs

... and much more ...