



230i/240i

**Audio/Video/Data over IP
Network Transmission
System**



***“Transmit Video/Audio
anywhere within your
IP/Ethernet network.”***



***“Audio/video transport anywhere within
your IP/Ethernet network.”***

Applications

- Remote Multimedia Studio
- Distance Learning
- Audio/Video/Data Conferencing
- Media Retrieval and Distribution
- Broadcast Video Monitoring

Features

- Digitally compressed MPEG-2 Transport System
- Accommodates up to 1 Video, 2 Audio, 1 Local 10/100 Ethernet, and 1 Serial Data
- Real-Time High Quality Video Specifications
- Option with SDI Video Interface

The 230i/240i system provides simultaneous transmission of digitally compressed stereo audio and video over IP/Ethernet network. The 230i system transmits two (2) audios (or one (1) stereo audio pair) and one (1) baseband NTSC/PAL video channel in one direction through one 10/100 Ethernet port. The 240i transmits and receives two (2) audios (or one(1) stereo audio pair), one (1) baseband NTSC/PAL video, one (1) local 10/100 Ethernet, and one (1) serial data in both directions. The 230i/240i system is perfect to transmit audio/video anywhere within your IP/Ethernet network for high-quality real-time multimedia distribution applications.

The 230i/240i features a digitally compressed MPEG-2 transmission technology, capable of providing sharper video and crisp audio with little or no maintenance, high function reliability, and low operating cost. No sophisticated user adjustment is required in the 230i/240i system, enabling quick setup and trouble-free operation. The audio/video quality in the 230i/240i systems meets professional multimedia or presentation standards. In addition, due to its adjustable data rate, the 230i/240i is perfect for remote video monitoring for broadcast video.

The 230i/240i comes with a standalone, compact, ruggedized packaging. Panel connectors are provided for video (BNC), audio (terminal block), 10/100 Ethernet connection (RJ-45), and serial data (terminal block).

Due to its versatile IP/Ethernet network transmission design, the 230i/240i is capable of addressing a variety of non-standard designs. Contact us to discuss your custom, OEM/private brand and high volume requirements.



230i/240i

Audio/Video/Data over IP Network Transmission Systems

Multimedia Transmission System



Composite Video

Channel Capacity	1
Formats	NTSC, PAL or S-Video (Input) NTSC, PAL, S-Video, or RGB (Output)
Compression	MPEG-2 MP@ML
Video Level	1.0Vp-p @ 75 Ohms
SNR (Weighted)	> 70dB
Connector	BNC (Composite) DIN (S-Video)

SDI Video

Signal Format	SMPTE-259M
Signal Resolution	10 bits
Data Rate	270 Mbps
Signal Level	800m Vpp
Connector	BNC, 75 Ohms

Audio

Channel Capacity	2
Operating Mode	Unbalanced
Input/Output Impedance	HiZ/LowZ (unbalanced)
Max Input/Output Level	3.4Vpp/3.0Vpp
Magnitude Freq. Response	20Hz to 20kHz @ +/-3dB
SNR (weighted)	> 60dB @ 1kHz, 3.4Vpp
Connector	Terminal Block

Serial Data

Channel Capacity	1
Signal Format	RS-232 or RS-422 Full Duplex
Data Rate	57.6 Kbps
Connector	Terminal Block

Ethernet

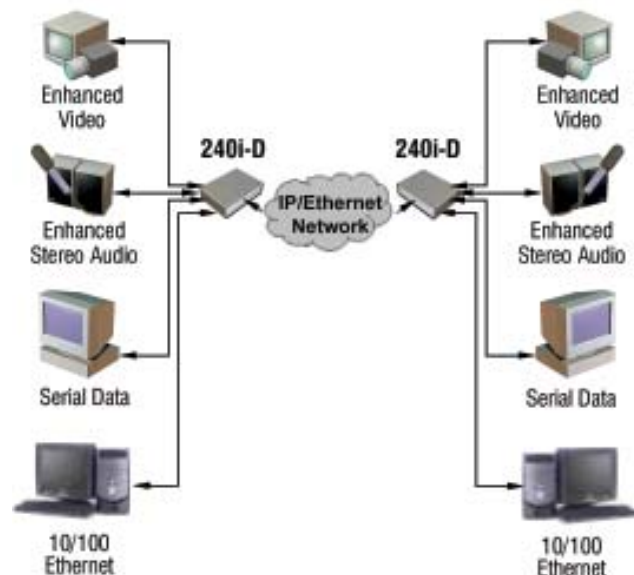
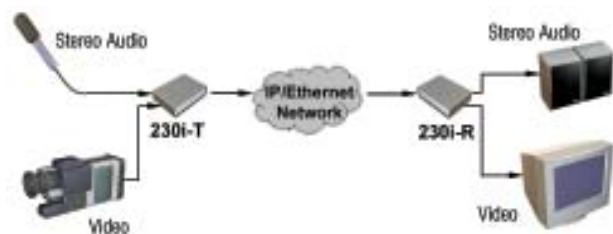
Connector Type	RJ-45
Format	10/100Base-T auto-sensing
Protocol	RTSP
Compressed Data Rate	64 Kb/s to 7 Mb/s



Physical

Dimension: (H x W x D)	
230i	1.72" x 4.36" x 8.75"
230i-SDI	1.72" x 8.60" x 12.0"
240i (w/o Serial Data)	1.72" x 8.60" x 12.0"
240i-D (w/Serial Data)	1.72" x 17.03" x 12.0"
Power	12VDC @ 0.5A max. (transmitter) 12VDC @ 0.6A max. (receiver)
Operating Temperature	0 to +50°C
Humidity	0 to 95% RH, non-condensing
Status Indicators	Power, Network Link/Activity, Video/Audio Activity

Application



DOING MORE WITH ONE FIBER *plus*

Subject to continued product enhancement, we reserve the right to change the above specifications and description without notice.