



6860

10/100 Base-TX Ethernet Switch with 1000 Base-FX Uplink

“10/100 Ethernet Switch with Fiber Uplink Port”



“Our data network products are diversified, reliable, and economical.”

Applications

Auto-Negotiation 10/100 Ethernet Switching LAN

Remote 10/100 Ethernet Switching LAN Connectivity

Features

IEEE 802.3 10Base-T and IEEE 802.3u 100Base-TX and FX Standard

Redundant Function for Fiber Port

Auto-Cross Over for MDI/MDIX in TP Port

Support N-Way Protocol for 10Base-T and/or 100Base-TX Connections

Store and Forward Switching Mechanism

Full/Half Duplex Mode Operation

Ultra-long Distance Fiber Uplink for >80 Km

1 Fiber Solution also Available (WDM)

The 6860 is a powerful, high-performance 4- or 7-port 10/100Base-TX Ethernet Switch with one or two fiber uplink ports. Twisted pair ports are capable of 10 or 100 Mbps auto-negotiation operation (N-Way). 100 Mbps according to the 100Base-FX Standard are supported on the fiber interface. The 6860 is an ideal solution for micro-segmenting large networks into smaller sub-nets for overall improved performance, so enabling the most demanding bandwidth multimedia and imaging applications. Moreover, the 10/100 Mbps auto-sensing capability provides an easy way in which to move from a 10 Mbps to a 100 Mbps network.

Compared with shared 10 Mbps or 100 Mbps networks, this N-Way switch delivers a dedicated 10/100 Mbps connection to every attached client unit with no bandwidth congestion problems. Store-and-forward switching modes guarantee low latency and fast data transmission. Full-duplex mode allows the simultaneous transmission and reception of frames without the risk of collisions as well as a doubling of the network bandwidth.

The 6860 design is capable of addressing a variety of non-standard designs. Contact us to discuss your custom, OEM/private brand and high volume requirements.



Doing More With One Fiber



6860

10/100 Base-TX Ethernet Switch with 1000 Base-FX Uplink

Network Data Transmission Systems



Electrical

Data Interface	IEEE 802.3 10/100 Ethernet
Channel Capacity	4 or 7
Operation	Half or Full Duplex, Auto-Negotiation
MAC Table	2K (7-port) 1K (4-port)
Memory Buffer	128K (7-port) 64K (4-port)
Forward/Filter Rate	14,880 pps (10M) 148,800 pps (100M)
Connector	RJ-45

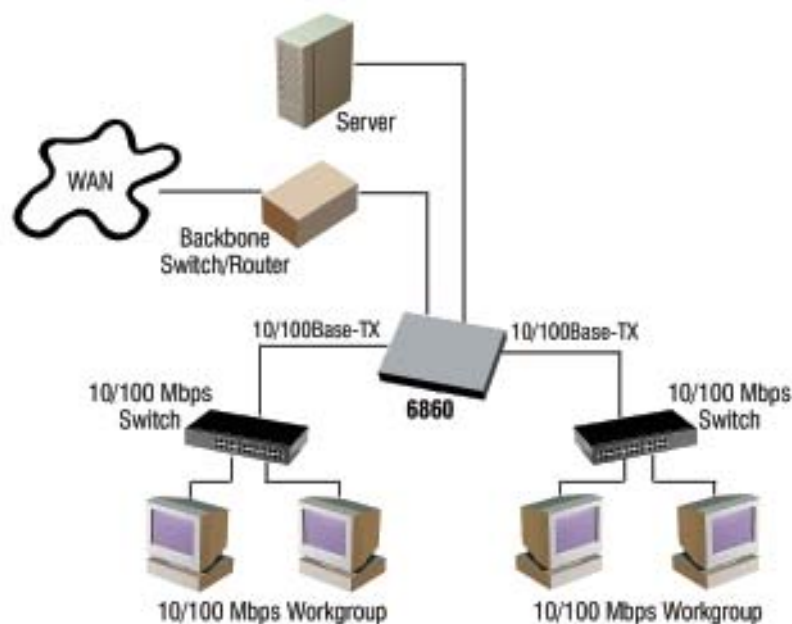
Optical

Fiber Type	Multimode or Singlemode
Number of Fibers	2 (6860) or 1 (6861)
Operating Wavelength	1310 or 1550 nm
Fiber Connector	SC (Multimode and Singlemode)

Physical

Dimension: (H x W x D)	1.4" x 9.5" x 6.1" (7-port) 1.4" x 8.7" x 5.8" (4-port)
Power Level	12 VDC @ 1 A
Operating Temperature	0 to +50°C
Humidity	0 to 95% RH, non-condensing
Status Indicators	Power, FDX, TP Link, Optical Link

Application



Doing More With One Fiber

Subject to continued product enhancement, we reserve the right to change the above specifications and description without notice.

